

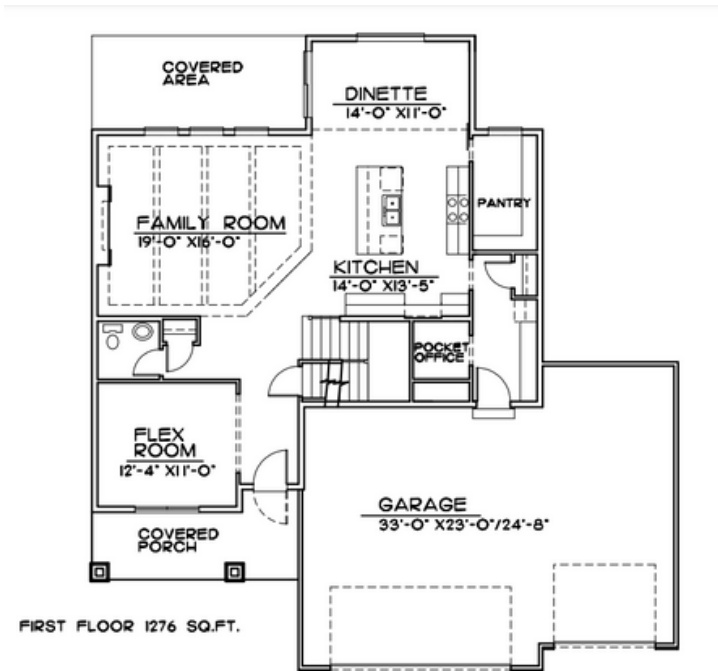


TRADITIONAL







CRAFTSMAN

The Wesley

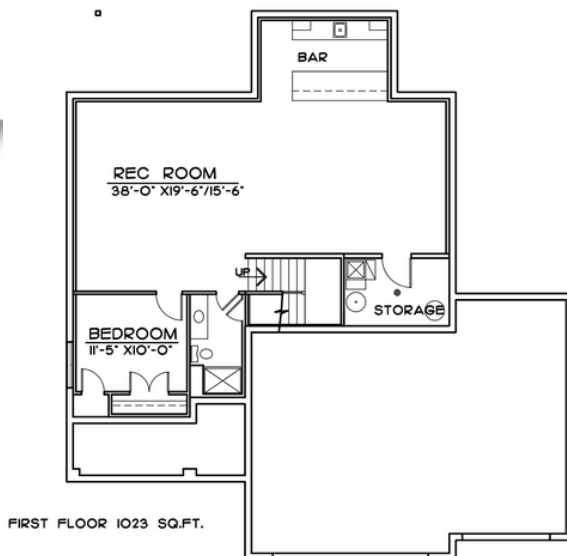
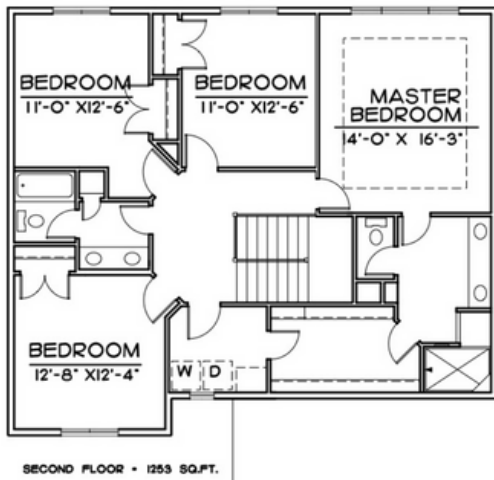


Main Features

-  4 Bedroom
-  3 Bath
-  3 Car Garage
-  2529 Finished Square FT.

GENERAL INFORMATION

- Two Story
- 4 Bedrooms
- 3 Bathroom
- 3rd Car Garage
- 2592 Base SQFT



INCLUDED FEATURES

- Open Floor Plan
- Drop Zone
- Large Hidden Pantry
- Pocket Office
- Main Floor Flex Room
- Subway Backsplash in the Kitchen
- LVP in Kitchen, Laundry and Baths
- Electric 50" Fireplace
- Stainless GE Appliances
- Built in Appliance Options Available
- Quartz Countertops
- Delta Plumbing Fixtures
- Huge 2nd Floor Laundry with Optional Folding Counter
- Double Bath Vanities in 2nd floor Bathrooms
- Primary Bath has a large walk in shower
- Wood Shelving Throughout
- Optional Covered Porch and Patio
- Lap Siding
- Sprinkler System
- Energy Efficient Windows
- 5 Year Dry Basement Warranty
- 1 Year Builder Warranty
- Elevation Options Available
- 2x6 Exterior Wall Construction
- All Cabinet Hardware Included
- Passive Radon System
- Storm Door

CONNECT WITH US

Kristina Philbin: 402.305.4031
info@storyhomesomaha.com

 storyhomesomaha.com

 @Storyhomesomaha

 @Storyhomesomaha

 storyhomesomaha

 Story Homes Omaha