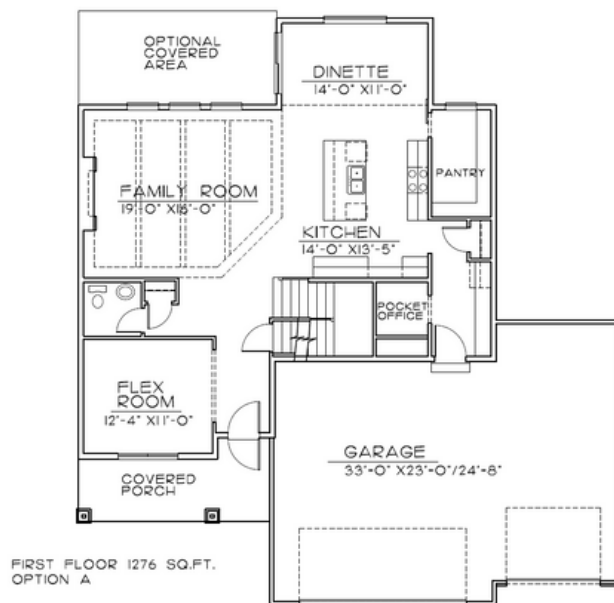




**TRADITIONAL**



**CRAFTSMAN**



## Main Features



4 Bedroom



3 Bath



3 Car Garage



2529 Finished Square FT.

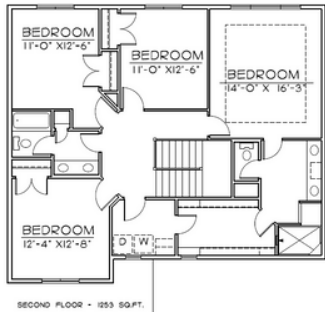
*The Wesley*

**402.305.4031**

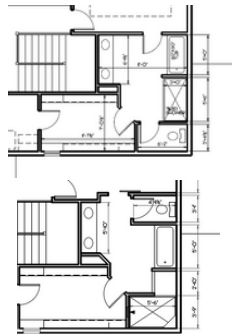
[www.storyhomesomaha.com](http://www.storyhomesomaha.com)

## GENERAL INFORMATION

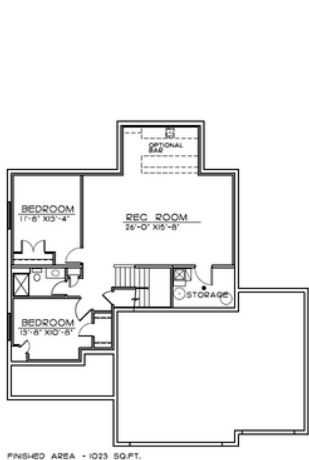
- Two Story
- 4 Bedrooms
- 3 Bathroom
- 3rd Car Garage
- 2529 Base SQ FT



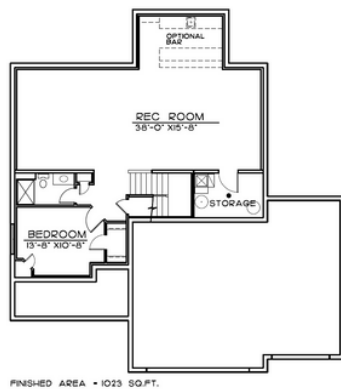
Second Floor Layout



Alternate Primary Bath Layouts



2 bedroom option




1 bedroom option

## INCLUDED FEATURES

- Open Floor Plan
- Drop Zone
- Large Pantry with Barn Door
- Pocket Office
- Main Floor Flex Room
- Subway Backsplash in the Kitchen
- LVP in Kitchen, Entry, Dinette, Pantry, Mud Room, Pocket Office, Baths and Laundry
- Electric 50" Fireplace
- Stainless GE Appliances
- Built in Appliance Options Available
- Quartz Countertops throughout
- Delta Plumbing Fixtures
- 2nd Floor Laundry with Optional Folding Counter and Upper Cabinets
- Primary Bath has a large walk in tiled shower
- Wood Shelving Throughout
- Optional Covered Patio or Deck
- James Hardi Cement Board Siding
- Sprinkler System- 5 Zone
- Energy Efficient Windows
- 5 Year Dry Basement Warranty
- 1 Year Builder Warranty
- Elevation Options Available
- 2x6 Exterior Wall Construction
- All Cabinet Hardware Included
- Passive Radon System Included
- Humidifier Included
- Gas and Electric Hook Ups to Oven range Included
- Optional Basement Finishes with bars

## CONNECT WITH US

Kristina Philbin: 402.305.4031  
info@storyhomesomaha.com

 storyhomesomaha.com



@Storyhomesomaha



@Storyhomesomaha



storyhomesomaha



Story Homes Omaha