



TRADITIONAL

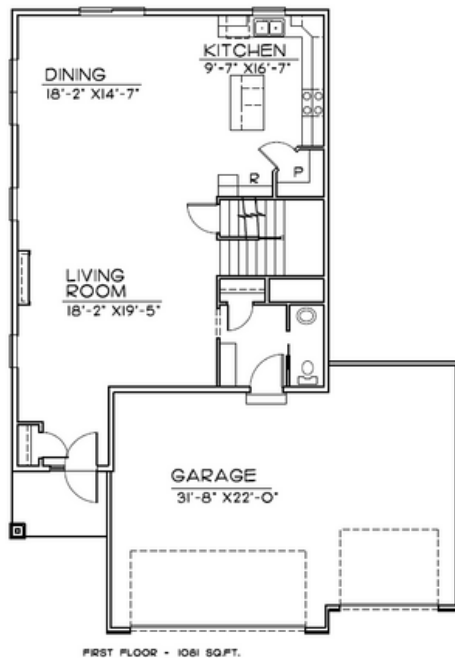


CRAFTSMAN



MODERN

The Mackenzie



MAIN FLOOR

Main Features

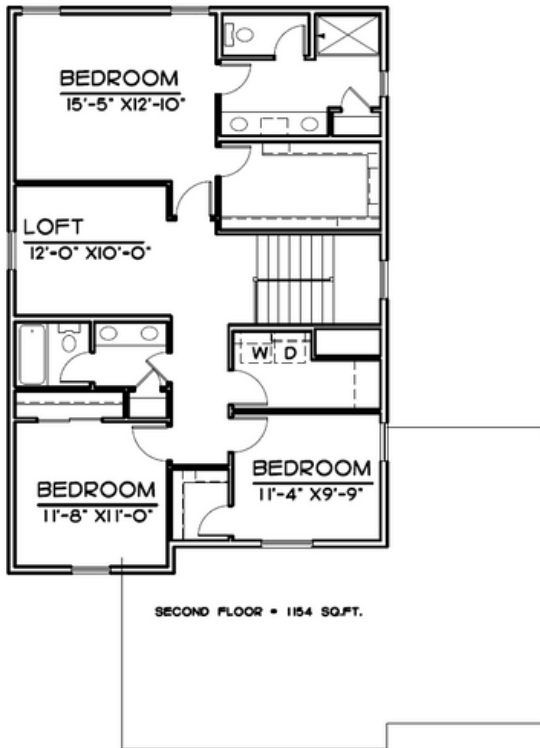
-  3 Bedroom / Optional 4th
-  3 Bath
-  3 Car Garage
-  2235 Finished Square FT.

402.305.4031

www.storyhomesomaha.com

GENERAL INFORMATION

- Two Story
- 3 - 4 Bedrooms
- 3 Bathrooms
- 3rd Car Garage
- 2235 Base SQFT



SECOND FLOOR

INCLUDED FEATURES

- Wide Open Floor Plan
- Subway Backsplash in the Kitchen
- Electric 50" Fireplace
- Stainless GE Appliances
- LVP Throughout Most Main Floor Area
- Quartz Countertops
- Delta Plumbing Fixtures
- Interior Door Style Choices
- Chrome Hardware and Fixtures
- 2nd Floor Laundry
- Huge 8' Primary Bath Vanity
- Linen Closet in Primary
- Large Walk-in Closet Primary
- Wood Shelving Throughout
- Lap Siding
- Sprinkler System
- Energy Efficient Windows
- 5 Year Dry Basement Warranty
- 1 Year Builder Warranty
- Elevation Options

CONNECT WITH US

Kristina Philbin: 402.305.4031
info@storyhomesomaha.com

 storyhomesomaha.com



@Storyhomesomaha



@Storyhomesomaha



storyhomesomaha



Story Homes Omaha