

Story Homes

Start your next chapter with us



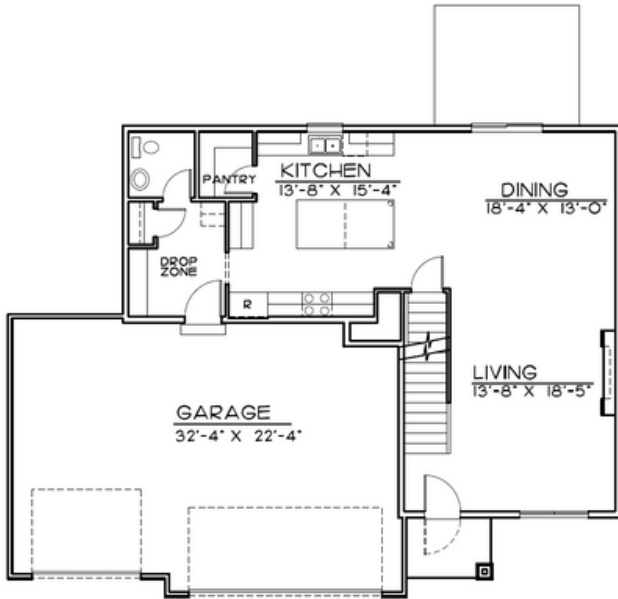

TRADITIONAL



CRAFTSMAN



MODERN



FIRST FLOOR - 974 SQ.FT.

MAIN FLOOR

Main Features

-  4 Bedroom/Main Floor 5th Bedroom Option
-  4 Bath
-  3 Car Garage
-  2300 Finished Square FT.

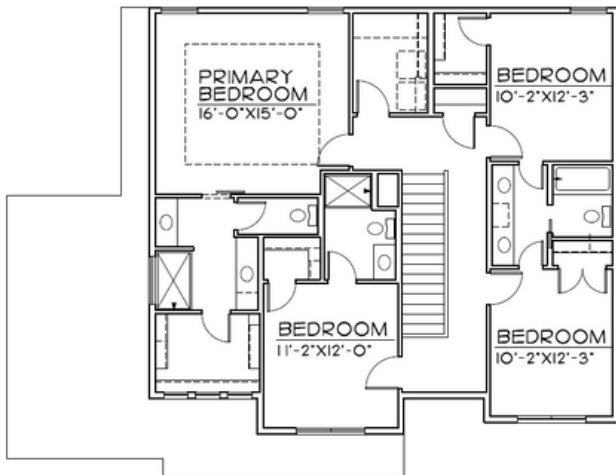
The Locksley

402.305.4031

www.storyhomesomaha.com

GENERAL INFORMATION

- Two Story
- 4 Bedrooms or Main Floor 5th Bed Option
- 4 Bathrooms
- 3rd Car Garage
- 2300 Base SQFT



SECOND FLOOR 1326 SQ.FT.

SECOND FLOOR

INCLUDED FEATURES

- Wide Open Floor Plan
- Drop Zone
- Walk in Pantry
- Floating Shelves in Kitchen
- Main Floor Bedroom/Office Option
- Subway Backsplash in the Kitchen
- Electric 52" Fireplace
- Stainless GE Appliances
- LVP Throughout Main Floor
- Quartz Countertops
- Delta Plumbing Fixtures
- Huge 2nd Floor Laundry with Folding Counter Option
- Jack and Jill Bathroom
- His and Her Primary Bath Vanities
- Optional Tub in Primary Bathroom
- Additional 3/4 Bathroom on 2nd Floor
- Wood Shelving Throughout
- Lap Siding
- Sprinkler System
- Energy Efficient Windows
- 5 Year Dry Basement Warranty
- 1 Year Builder Warranty
- Elevation Options
- Passive Radon System
- 2x6 Exterior Wall Construction
- Storm Door
- All Cabinet Hardware Included
- Built in Appliance Options Available

CONNECT WITH US

Kristina Philbin: 402.305.4031
info@storyhomesomaha.com

 storyhomesomaha.com



@Storyhomesomaha



@Storyhomesomaha



storyhomesomaha



Story Homes Omaha