



2021-33608

09/02/2021 02:23:56 PM

Recording fees paid:

\$22.00

Pages: 3

Deb Houghtaling

COUNTY CLERK/REGISTER OF DEEDS

Submitter: FULLENKAMP JOBEUN JOHNSON

By: ah



SIDBST

**SANITARY AND IMPROVEMENT DISTRICT STATEMENT
SARPY COUNTY, NEBRASKA**

STATE OF NEBRASKA)
) ss.
COUNTY OF SARPY)

NICK YOUNG, being first duly sworn, states that he is the Clerk of Sanitary and Improvement District No. 356 of Sarpy County, Nebraska and makes the following statement regarding same:

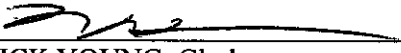
1. District Number: 356
2. Outer Boundaries: See Exhibit "A" attached hereto and by this reference made a part hereof.
3. The purpose of this District shall be acquiring, installing, repairing, maintaining, renewing, operating and replacing electrical service lines and conduits, a sewer system, a water system, a system of sidewalks, public roads, streets and highways, a civil defense warning system, to contract for water for fire protection and for resale to the residents of the District, and to contract for gas and electricity, for street lighting for the public streets and highways within the District and to acquire, improve and operate public parks, playgrounds and recreational facilities. The District shall have all of the powers and authorities as are permitted by law, to achieve the purposes herein above set forth, including, but not in limitation of the foregoing, the power and authority to contract with corporations, utility companies, or municipalities for water for fire protection and for resale to the residents of the District, and for electricity and gas, for street lighting of the public streets and highways within the District and for the disposal of sewage in the use of existing sewer improvement facilities and for the operation and maintenance of electrical service lines and conduits.
4. The District has the power to levy an unlimited property tax to pay its debts and its expenses of operation and maintenance.
5. The District is required by statute to levy special assessments on property in the District to the full extent of special benefits arising by reason of improvements installed by it.
6. In all years when a budget is required by law, the District's annual budget is filed with

When recorded return to:
Larry A. Jobeun
Fullenkamp Jobeun Johnson & Beller, LLP
11440 West Center Road
Omaha, NE 68144

the County Clerk, which budget shows anticipated revenue and expenses, levy, and indebtedness of the District.

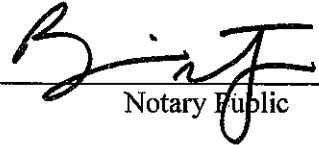
7. The actual current levy of the District may be obtained from the County Clerk.

8. A copy of the District's annual financial audit is on file with the Clerk of the District and the State Auditor of Public Accounts.


NICK YOUNG, Clerk
Sanitary and Improvement District
No. 356 of Sarpy County, Nebraska

SUBSCRIBED and sworn to before me this 16th day of August, 2021.

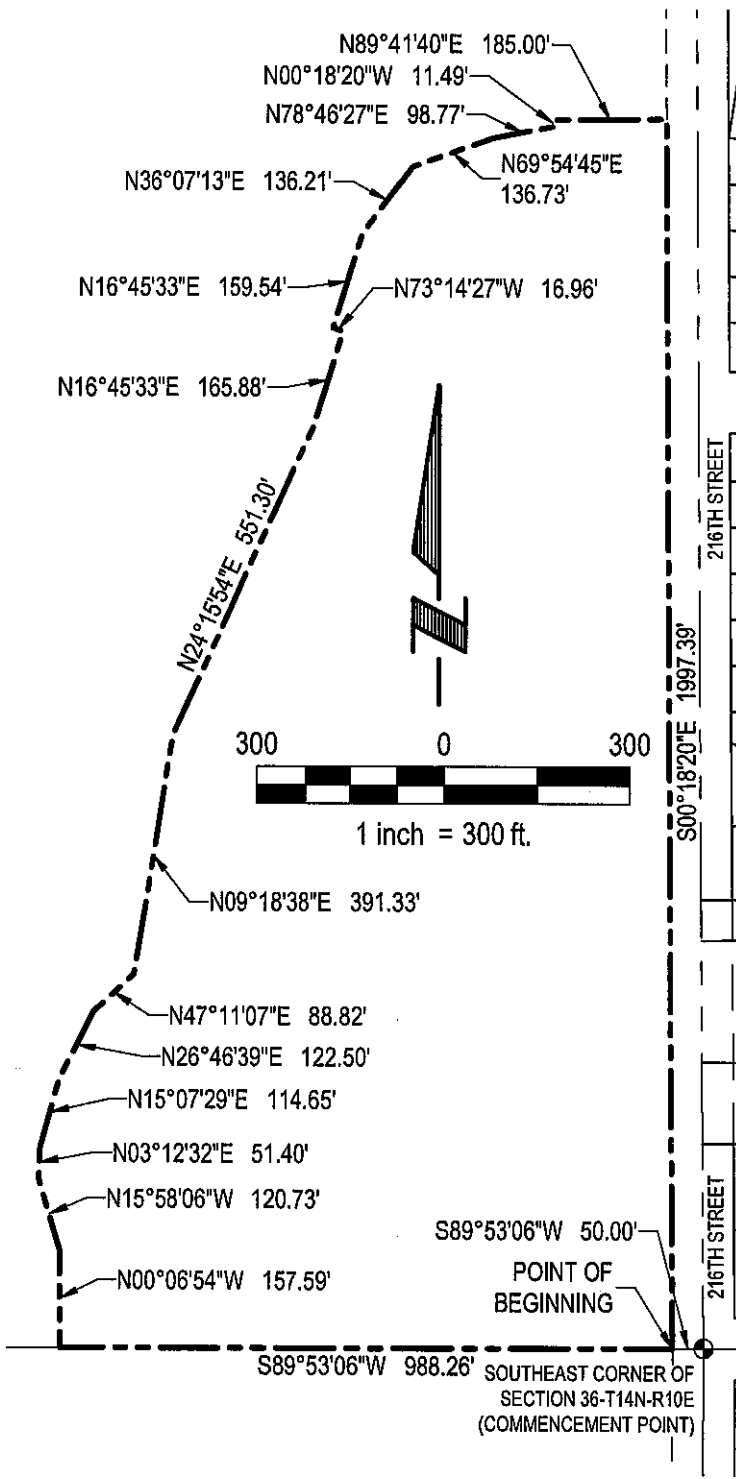



Notary Public

When recorded return to:

Larry A. Jobeun
Fullenkamp Jobeun Johnson & Beller, LLP
11440 West Center Road
Omaha, NE 68144

EXHIBIT "A"



LEGAL DESCRIPTION

A TRACT OF LAND LOCATED IN PART OF THE NE1/4 OF THE SE1/4, ALONG WITH PART OF THE SE1/4 OF THE SE1/4 OF SECTION 26, TOWNSHIP 14 NORTH, RANGE 10 EAST OF THE 6TH P.M., SARPY COUNTY, NEBRASKA. MORE PARTICULARLY DESCRIBED AS FOLLOWS:

COMMENCING AT THE SOUTHEAST CORNER OF SAID SE1/4 OF SECTION 26; THENCE S89°53'06"W (ASSUMED BEARING) ALONG THE SOUTHERLY LINE OF SAID SE1/4 OF SECTION 26, A DISTANCE OF 50.00 FEET TO A POINT ON THE WESTERLY RIGHT-OF-WAY LINE OF 216TH STREET, SAID POINT ALSO BEING THE POINT OF BEGINNING; THENCE CONTINUING S89°53'06"W ALONG SAID SOUTHERLY LINE OF THE SE1/4 OF SECTION 26, A DISTANCE OF 988.26 FEET; THENCE N00°06'54"W, A DISTANCE OF 157.59 FEET; THENCE N15°58'06"W, A DISTANCE OF 120.73 FEET; THENCE N03°12'32"E, A DISTANCE OF 51.40 FEET; THENCE N15°07'29"E, A DISTANCE OF 114.65 FEET; THENCE N26°46'39"E, A DISTANCE OF 122.50 FEET; THENCE N47°11'07"E, A DISTANCE OF 88.82 FEET; THENCE N09°18'38"E, A DISTANCE OF 391.33 FEET; THENCE N24°15'54"E, A DISTANCE OF 551.30 FEET; THENCE N16°45'33"E, A DISTANCE OF 165.88 FEET; THENCE N73°14'27"W, A DISTANCE OF 16.96 FEET; THENCE N16°45'33"E, A DISTANCE OF 159.54 FEET; THENCE N36°07'13"E, A DISTANCE OF 136.21 FEET; THENCE N69°54'45"E, A DISTANCE OF 136.73 FEET; THENCE N78°46'27"E, A DISTANCE OF 98.77 FEET; THENCE N00°18'20"W, A DISTANCE OF 11.49 FEET; THENCE N89°41'40"E, A DISTANCE OF 185.00 FEET TO A POINT ON SAID WESTERLY RIGHT-OF-WAY LINE OF 216TH STREET; THENCE S00°18'20"E ALONG SAID WESTERLY RIGHT-OF-WAY LINE OF 216TH STREET, A DISTANCE OF 1,997.39 FEET TO THE POINT OF BEGINNING.

SAID TRACT OF LAND CONTAINS 1,500,257 SQUARE FEET OR 34.441 ACRES, MORE OR LESS.



E & A CONSULTING GROUP, INC.
Engineering Answers

E & A CONSULTING GROUP, INC.

Engineering • Planning • Environmental & Field Services
10909 Mill Valley Road, Suite 100 • Omaha, NE 68154 Phone: 402.895.4700 • Fax: 402.895.3599

Job No.: P2017.290.002

Date: 06/10/2021

Drawn by: EAS

Scale: 1"=300'

Sht: 1 of 1

DISTRICT BOUNDARY

SANITARY & IMPROVEMENT

DISTRICT NO. 356

SARPY COUNTY, NEBRASKA