



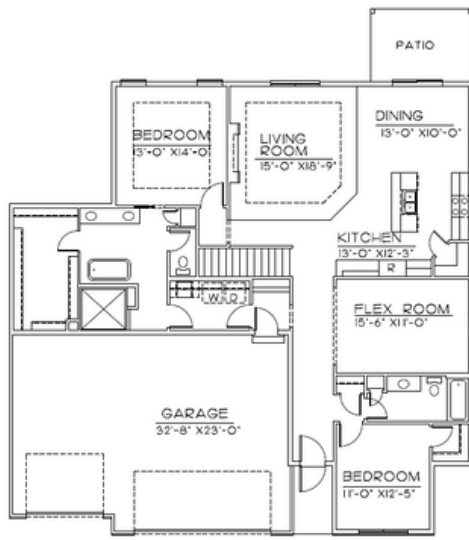
TRADITIONAL



CRAFTSMAN

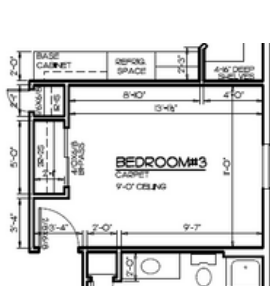


MODERN



FIRST FLOOR - 1868 SQ.FT.

MAIN FLOOR



**BEDROOM
OPTION**



**WALK IN PANTRY
WITH OFFICE**



**WALK IN PANTRY
WITH BEDROOM**

Main Features



2-3 bedroom



2 Bath



3 Car Garage



1868 Finished Sq. Ft.

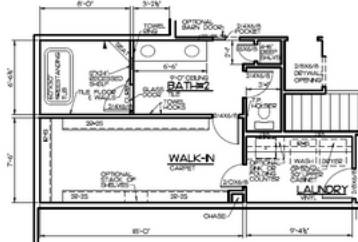
402.305.4031

www.storyhomesomaha.com

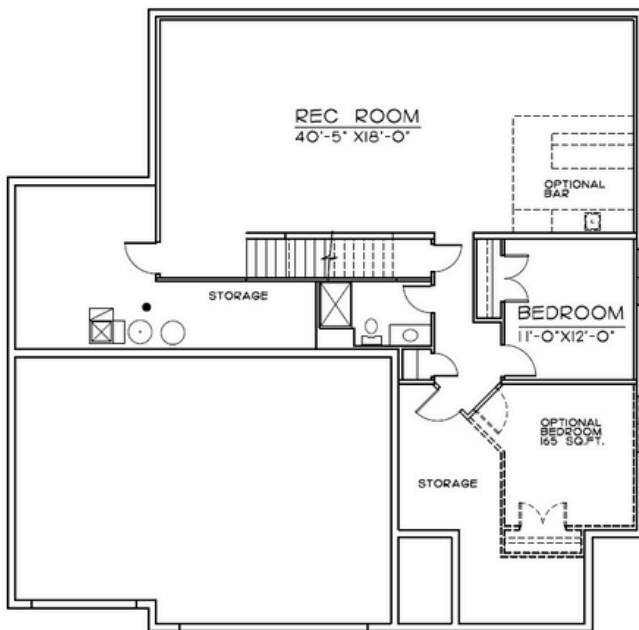
The Lennox XL

GENERAL INFORMATION

- Ranch
- 2-3 Bedroom
- Flex Room/ Office
- 2 Bathrooms
- 3 Car Garage



**WET ROOM OPTION
IN PRIMARY**



FINISHED AREA = 1095 SQ.FT.

**BASEMENT
LAYOUT**

INCLUDED FEATURES


- Open Floor Plan
- Drop Zone
- Subway Backsplash in the Kitchen
- LVP in Kitchen, Dinette, Laundry, Pantry, Baths, Laundry, and Entry
- Electric 50" Fireplace
- Stainless GE Appliances
- Quartz Countertops Throughout
- Delta Plumbing Fixtures
- Cabinet Hardware included Throughout
- Primary Bath has a large walk in shower or optional wet room layout available
- Freestanding Tub in Primary Bathroom
- Wood Shelving Throughout
- James Hardi Cement Board Siding
- Sprinkler System- 5 Zone
- Energy Efficient Windows
- 5 Year Dry Basement Warranty
- 1 Year Builder Warranty
- Elevation Options Available
- Finished Basement is Optional- 1095 SQ FT
- Passive Radon System
- Humidifier
- Gas and Electric Hookups to Oven Range
- 2x6 Exterior Wall Construction
- Tytar House Wrap
- 3rd Car Garage Included
- Folding Counter or Mud Sink in Laundry Optional

CONNECT WITH US

Kristina Philbin: 402.305.4031
info@storyhomesomaha.com

 storyhomesomaha.com

 @Storyhomesomaha

 @Storyhomesomaha

 storyhomesomaha

 Story Homes Omaha