



**TRADITIONAL**

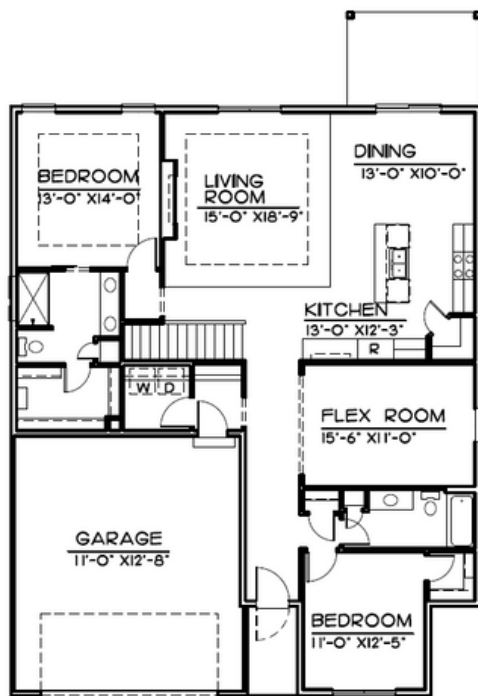


**CRAFTSMAN**






**MODERN**

*The Lennox*



## Main Features

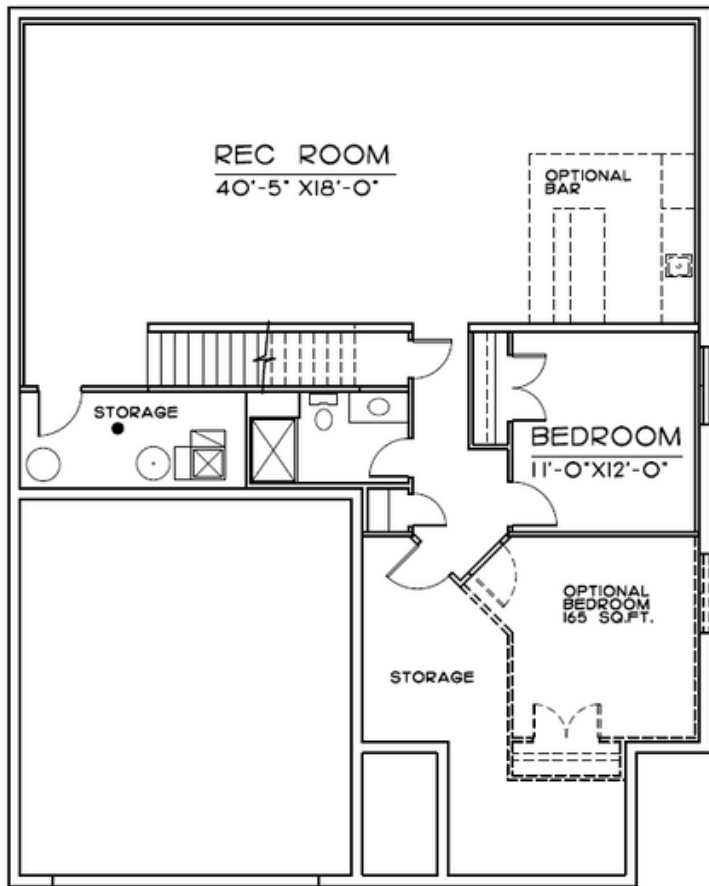
-  3 bedroom
-  2 Bath
-  2 Car Garage / 3 Car Optional
-  1684 Finished Square FT.

**402.305.4031**

[www.storyhomesomaha.com](http://www.storyhomesomaha.com)

## GENERAL INFORMATION

- Villa or Ranch Option
- 3 Bedroom
- 2 Bathrooms
- 2 or 3 Car Garage



FIRST FLOOR = 1095 SQ.FT.


## INCLUDED FEATURES

- Open Floor Plan
- Drop Zone
- Flex Room Standard/3rd Bedroom Opt
- Subway Backsplash in the Kitchen
- LVP in Kitchen/Dinette, Dropzone, Halls and Entry
- Electric 50" Fireplace
- Stainless GE Appliances
- Built in Appliance Options Available
- Quartz Countertops Throughout
- Delta Plumbing Fixtures
- Double Bath Vanities in Primary Bathroom
- Primary Bath has a large walk in shower
- Wood Shelving Throughout
- Lap Siding
- Sprinkler System
- Energy Efficient Windows
- 5 Year Dry Basement Warranty
- 1 Year Builder Warranty
- Elevation Options Available
- Finished Basement is Optional
- Great Villa Design with option to be built in single family areas with a 3rd car garage addition
- Passive Radon
- 2x6 Exterior Walls
- Storm Door
- All Cabinet Hardware Included

## CONNECT WITH US

Kristina Philbin: 402.305.4031  
info@storyhomesomaha.com

 storyhomesomaha.com

 @Storyhomesomaha

 @Storyhomesomaha

 storyhomesomaha

 Story Homes Omaha