

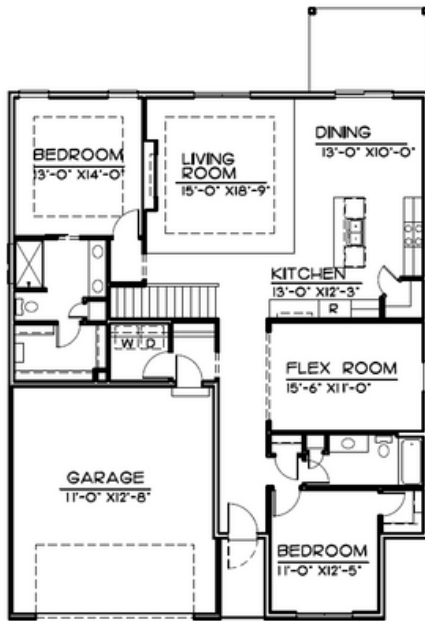
The Lennox - 1684 SQ FT



TRADITIONAL



CRAFTSMAN



FIRST FLOOR • 1684 SQ.FT.

MAIN FLOOR



MODERN

Main Features



2-3 bedroom



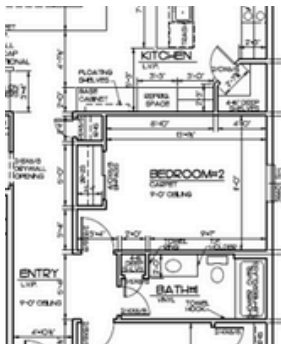
2 Bath



2 Car Garage / 3 Car Optional



1684 Finished Square FT.



**BEDROOM
OPTION**



**WALKIN PANTRY
WITH OFFICE**



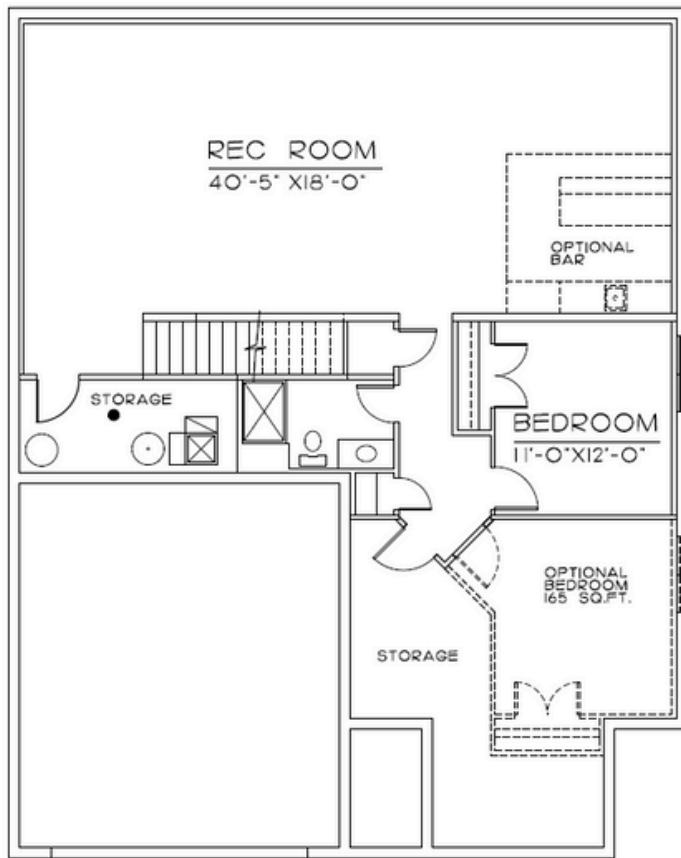
**WALK IN PANTRY
WITH BEDROOM**

402.305.4031

www.storyhomesomaha.com

GENERAL INFORMATION

- Villa or Ranch Option
- 2- 3 Bedroom
- 2 Bathrooms
- 2 or 3 Car Garage




FIRST FLOOR = 1095 SQ.FT.

INCLUDED FEATURES

- Open Floor Plan
- Drop Zone
- Flex Room Standard/3rd Bedroom Option
- Subway Backsplash in the Kitchen
- LVP in Kitchen, Dinette, Mud Room, Hallways Baths, Laundry, Pantry, and Entry
- Electric 50" Fireplace
- Stainless GE Appliances
- Built in Appliance Options Available
- Quartz Countertops Throughout
- Delta Plumbing Fixtures
- All Cabinet Hardware Included
- Primary Bath has a large walk in shower
- Wood Shelving Throughout
- James Hardi Cement Board Siding
- Sprinkler System- 5 Zone
- Energy Efficient Windows
- 5 Year Dry Basement Warranty
- 1 Year Builder Warranty
- Elevation Options Available
- Finished Basement is Optional- 1095 SQ FT
- Great Villa Design with option to be built in single family areas with a 3rd car garage addition
- Passive Radon System
- 2x6 Exterior Walls
- Humidifier
- Gas and Electric Hookups to Oven Range

CONNECT WITH US

Kristina Philbin: 402.305.4031
info@storyhomesomaha.com

 storyhomesomaha.com



@Storyhomesomaha



@Storyhomesomaha



storyhomesomaha



Story Homes Omaha