

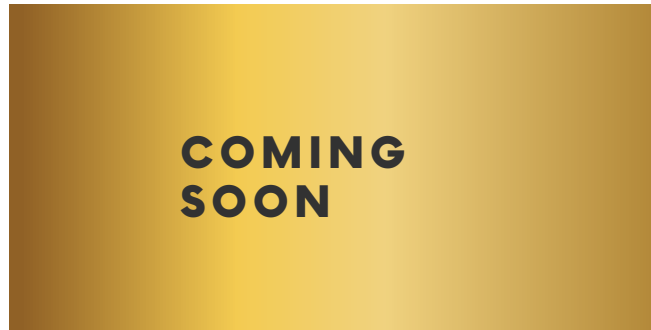


TRADITIONAL



**COMING
SOON**

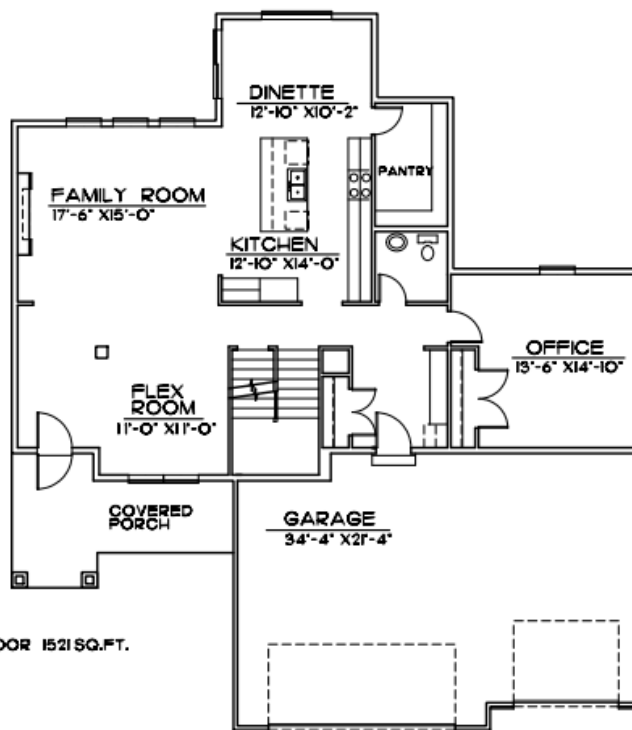
CRAFTSMAN



**COMING
SOON**

MODERN





The Cannister



FIRST FLOOR 1521 SQ. FT.

MAIN FLOOR

Main Features

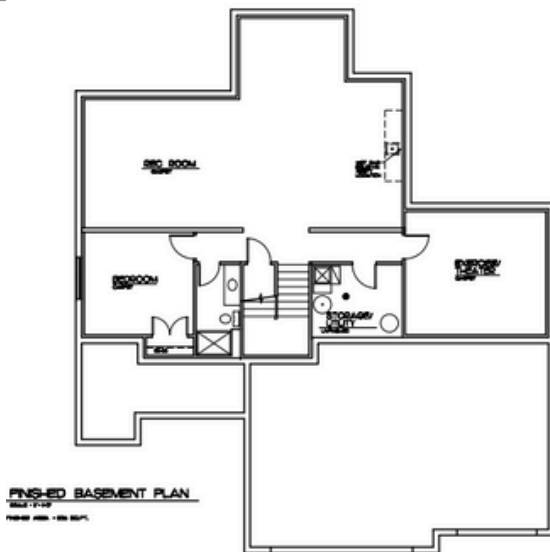
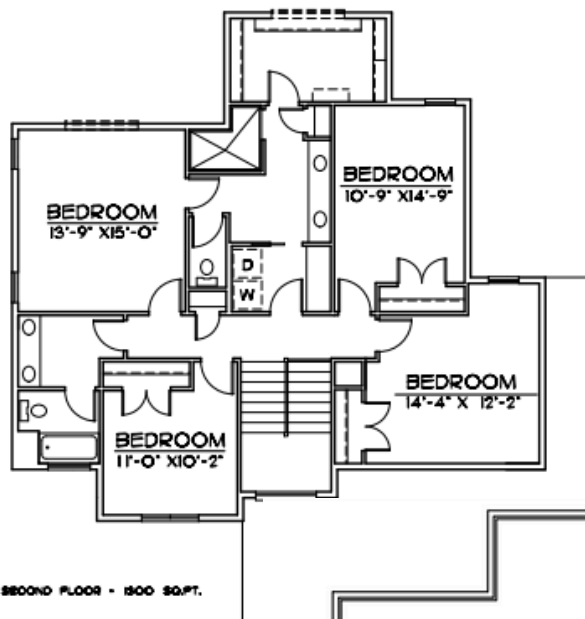
-  5 bedrooms
-  4 bath
-  3 Car Garage
-  2821 Finished Square FT.

402.305.4031

www.storyhomesomaha.com

GENERAL INFORMATION

- Two Story
- 5 Bedrooms
- 3 Bathrooms/ 4 Bathrooms with optional floorplan
- 3rd Car Garage
- 2821 Base SQFT



INCLUDED FEATURES

- This one is LARGE
- Full Covered Front Porch
- Drop Zone
- Butler's Pantry
- Main Floor Bedroom/Office
- Subway Backsplash in the Kitchen
- Electric 50" Fireplace
- Stainless GE Appliances
- LVP Flooring in Entry, Kitchen, Dinette, Pantry, Hall, Baths, and Laundry
- Quartz Countertops Throughout
- Delta Plumbing Fixtures
- 2nd Floor Laundry
- Wood Shelving Throughout
- Walk- in Shower in Primary
- Large Walk-in Closet in Primary
- Dual Vanities in Primary and Hall Bath
- James Hardie Cement Board Siding
- Sprinkler System- 5 Zone
- Energy Efficient Windows
- 5 Year Dry Basement Warranty
- 1 Year Builder Warranty
- Finished Basement Optional- 1226 SQ FT
- Typar House Wrap
- Passive Radon System
- Humidifier
- Gas and Electric Hook Ups to Oven Range

CONNECT WITH US

Kristina Philbin: 402.305.4031
Info@storyhomesomaha.com

 storyhomesomaha.com



@Storyhomesomaha



@Storyhomesomaha



storyhomesomaha



Story Homes Omaha