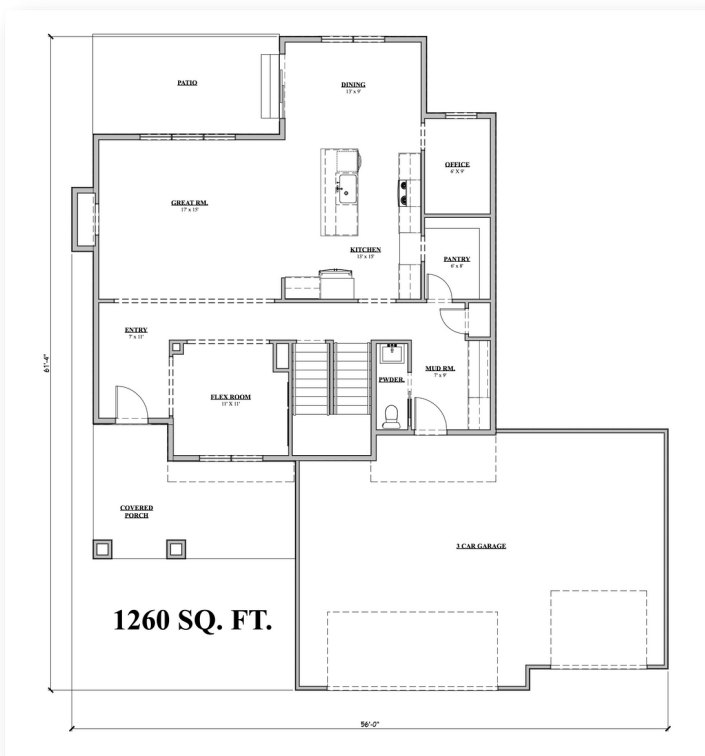




The Cannister



MAIN FLOOR

Main Features

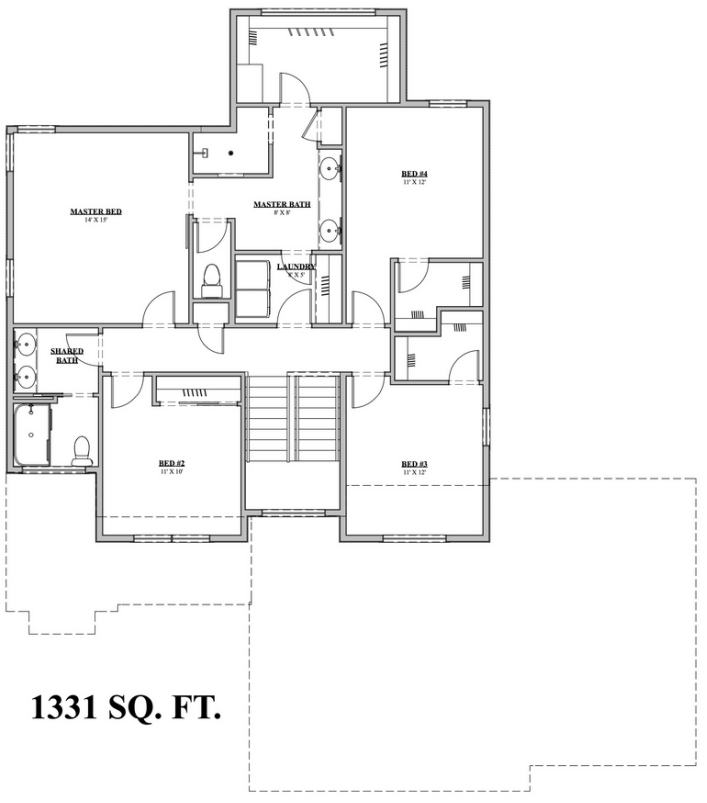
-  5 bedrooms
-  3 Bath/4 bath with optional floorplan
-  3 Car Garage
-  2790 Finished Square FT.

402.305.4031

www.storyhomesomaha.com

GENERAL INFORMATION

- Two Story
- 5 Bedrooms
- 3 Bathrooms/ 4 Bathrooms with optional floorplan
- 3rd Car Garage
- 2790 Base SQFT



SECOND FLOOR

INCLUDED FEATURES

- Drop Zone
- Butler's Pantry
- Pocket Office
- Main Floor Bedroom/Office Option
- Subway Backsplash in the Kitchen
- Electric 50" Allusion Fireplace
- Stainless/Slate GE Appliances
- LVP Flooring
- Quartz/Granite Countertops
- Kohler Plumbing Fixtures
- 2nd Floor Laundry
- Wood Shelving Throughout
- Walk- in Shower
- Dual Vanities
- Large Walk-in Closets
- James Hardi Siding
- Sprinkler System
- Energy Efficient Windows
- 5 Year Dry Basement Warranty
- 1 Year Builder Warranty
- Elevation Options

CONNECT WITH US

Kristina Philbin: 402.305.4031
storyhomesomaha@gmail.com

 storyhomesomaha.com



@Storyhomesomaha



@Storyhomesomaha



storyhomesomaha



Story Homes Omaha