



TRADITIONAL



**COMING
SOON**

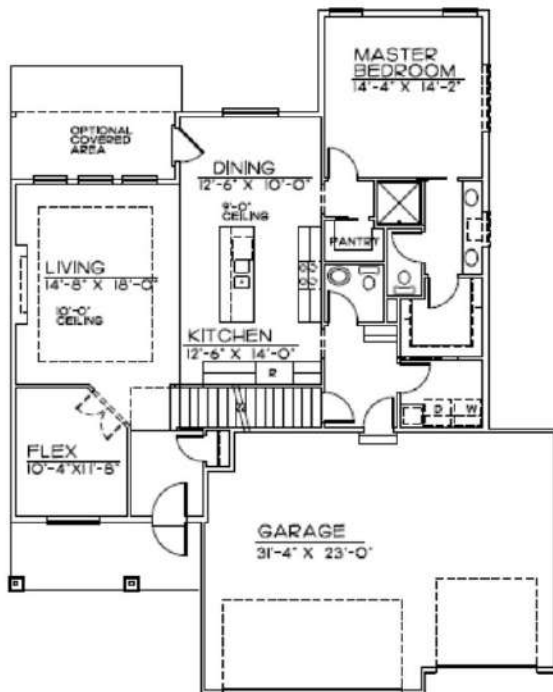
CRAFTSMAN



**COMING
SOON**

MODERN

The Hemingway



FIRST FLOOR • 1422 SQ.FT.

MAIN FLOOR

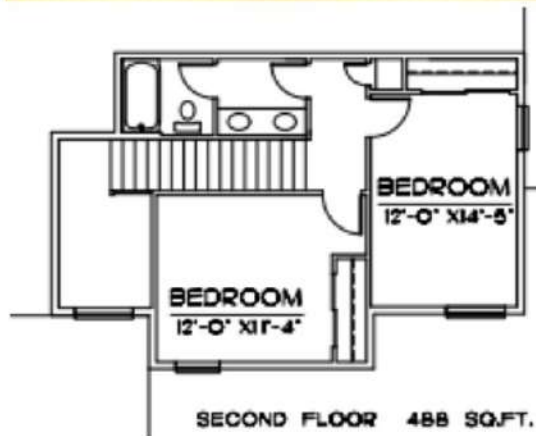
Main Features

-  3 bedroom
-  3 Bath
-  3 Car Garage
-  1910 Finished Sq. FT.

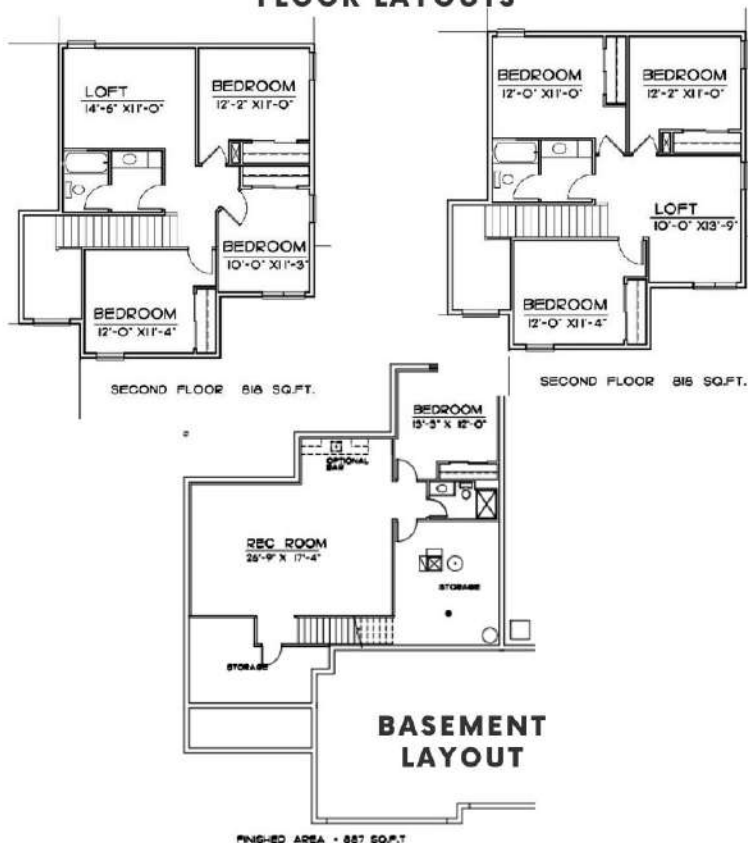
402.305.4031

www.storyhomesomaha.com

FLOOR PLAN DESIGN



OPTIONAL SECOND FLOOR LAYOUTS




INCLUDED FEATURES


- Open Floor Plan
- Drop Zone
- Loft Space Option Available
- Subway Backsplash in the Kitchen
- LVP in Kitchen/Dinette, Dropzone, Halls and Entry
- Electric 50" Fireplace
- Stainless GE Appliances
- Built in Appliance Options Available
- Quartz Countertops Throughout
- Delta Plumbing Fixtures
- Primary Bath has a glass door with tiled shower
- Wood Shelving Throughout
- James Hardi Cement Board Siding
- Sprinkler System- 5 Zone
- Energy Efficient Windows
- 5 Year Dry Basement Warranty
- 1 Year Builder Warranty
- Elevation Options Available
- Finished Basement is Optional- 887 SQ FT
- Great Villa Design with option to be built in single family areas with a 3rd car garage addition
- Passive Radon System
- 2x6 Exterior Walls
- Storm Door
- All Cabinet Hardware Included
- Passive Radon System
- Humidifier
- Tytar House Wrap
- Gas and Electric Hook Ups to Oven Range

CONNECT WITH US

Kristina Philbin: 402.305.4031
info@storyhomesomaha.com

 storyhomesomaha.com

 @Storyhomesomaha

 @Storyhomesomaha

 [storyhomesomaha](https://www.instagram.com/storyhomesomaha)

 [Story Homes Omaha](https://www.youtube.com/StoryHomesOmaha)