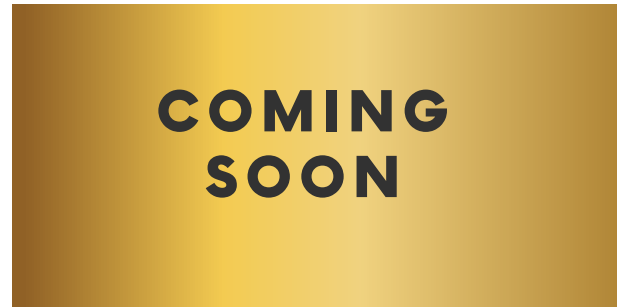


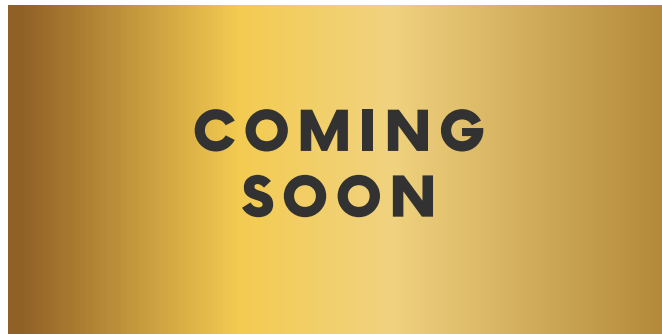


TRADITIONAL



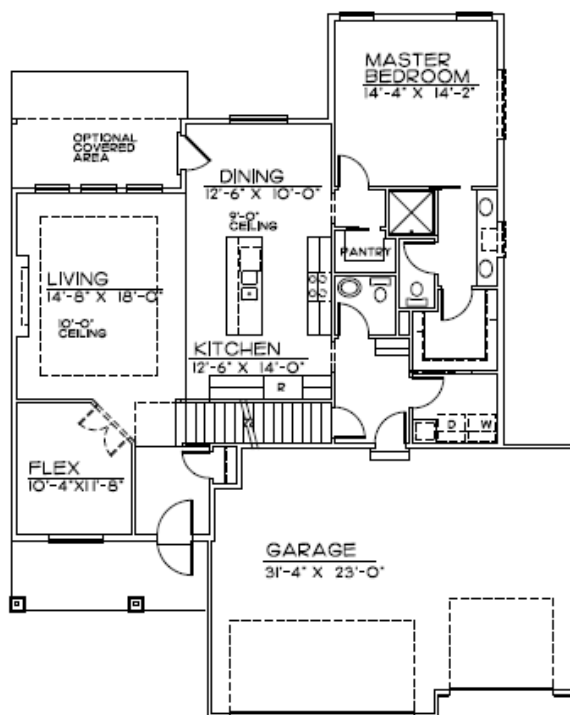
**COMING
SOON**

CRAFTSMAN



**COMING
SOON**


MODERN



FIRST FLOOR • 1422 SQ.FT.

MAIN FLOOR

Main Features

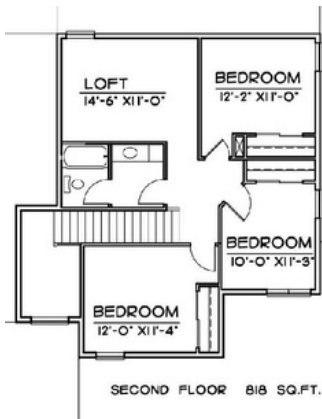
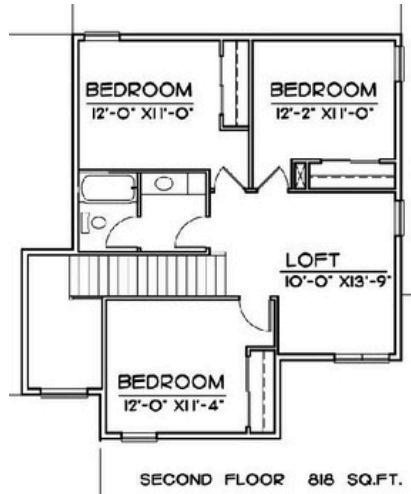
-  4 bedroom
-  3 Bath
-  3 Car Garage
-  2359 Finished Sq. FT.

402.305.4031

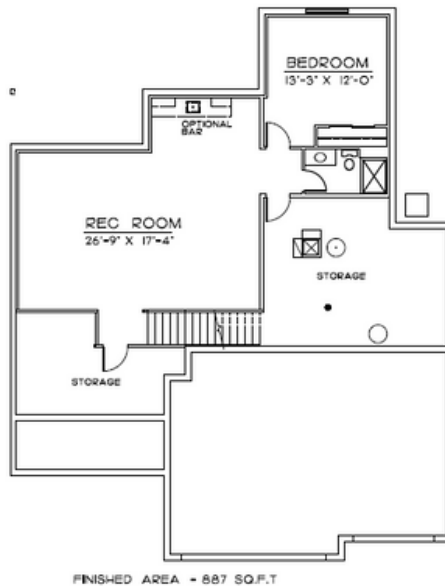
www.storyhomesomaha.com

The Hemingway

FLOOR PLAN DESIGN



BASEMENT LAYOUT



INCLUDED FEATURES

- Open Floor Plan
- Drop Zone
- Loft Space 2nd Floor
- Subway Backsplash in the Kitchen
- LVP in Kitchen/Dinette, Dropzone, Powder, Pantry and Entry
- Electric 50" Fireplace
- Stainless GE Appliances
- Built in Appliance Options Available
- Quartz Countertops Throughout
- Delta Plumbing Fixtures
- Primary Bath has a glass door with tiled shower
- Wood Shelving Throughout
- James Hardi Cement Board Siding
- Sprinkler System- 5 Zone
- Energy Efficient Windows
- 5 Year Dry Basement Warranty
- 1 Year Builder Warranty
- Elevation Options Available
- Finished Basement is Optional- 887 SQ FT
- Passive Radon System
- 2x6 Exterior Walls
- Storm Door
- All Cabinet Hardware Included
- Passive Radon System
- Humidifier
- Typar House Wrap
- Gas and Electric Hook Ups to Oven Range

CONNECT WITH US

Kristina Philbin: 402.305.4031
info@storyhomesomaha.com

storyhomesomaha.com

@Storyhomesomaha

@Storyhomesomaha

storyhomesomaha

Story Homes Omaha