



TRADITIONAL



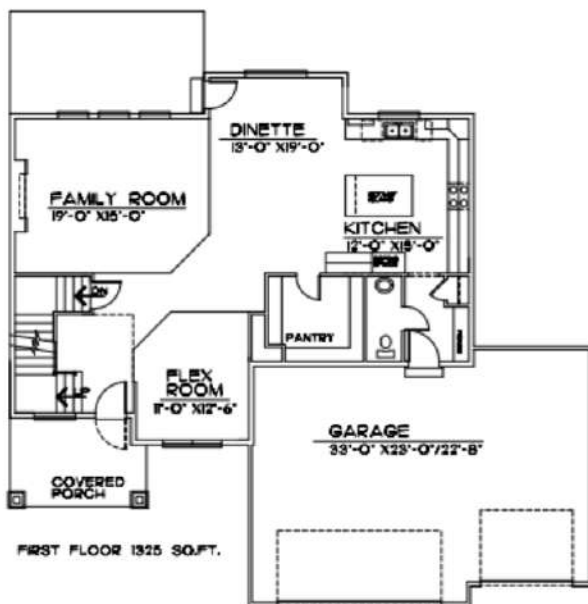
CRAFTSMAN



MODERN

Main Features

-  4 Bedroom
-  4 Bath
-  3 Car Garage
-  2600 Finished Square FT.



MAIN FLOOR

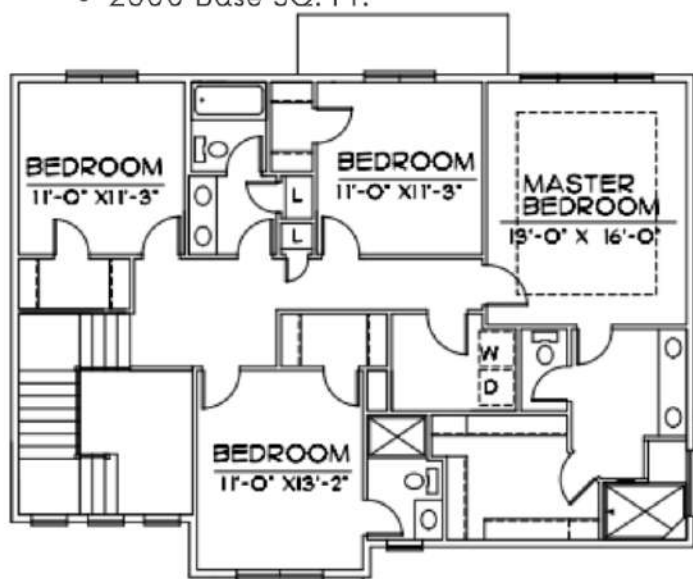
The Everdeen

402.305.4031

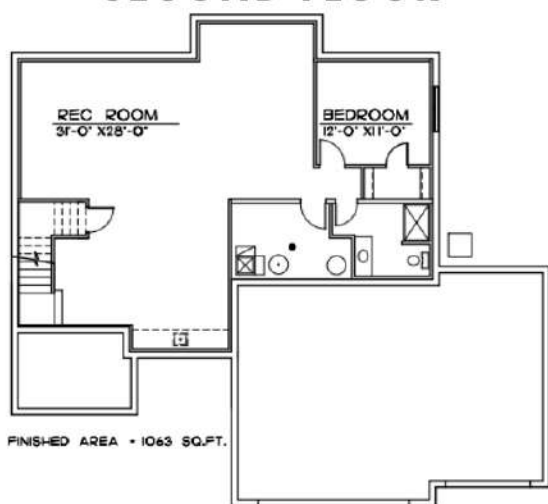
www.storyhomesomaha.com

GENERAL INFORMATION

- Two Story
- 4 Bedrooms
- 4 Bathroom
- 3rd Car Garage
- 2600 Base SQ. FT.



SECOND FLOOR



BASEMENT


INCLUDED FEATURES


- Open Floor Plan
- Drop Zone
- Large Walk in Pantry
- Main Floor Flex Room
- Subway Backsplash in the Kitchen
- LVP in Kitchen Entry, Dinette, Pantry, Powder Bath and Mud Room
- Electric 50" Fireplace
- Stainless GE Appliances
- Built in Appliance Options Available
- Quartz Countertops
- Delta Plumbing Fixtures
- 2nd Floor Laundry with Optional Folding Counter
- Walk In Closets in Every Room!
- Additional 3/4 Bath on 2nd Floor
- Quartz Countertops in baths and kitchen
- Primary Bath has a large walk in tiled shower
- Wood Shelving Throughout
- Optional Covered Porch and Patio
- James Hardi Cement Board Siding
- Sprinkler System- 5 Zone
- Energy Efficient Windows
- 5 Year Dry Basement Warranty
- 1 Year Builder Warranty
- Elevation Options Available
- 2x6 Exterior Wall Construction
- All Cabinet Hardware Included
- Passive Radon System and Humidifier
- Main Floor Guest Suite Optional
- Finished Basement Optional-1063 SQ FT
- Gas and Electric Hookup to Oven Range

CONNECT WITH US

Kristina Philbin: 402.305.4031
info@storyhomesomaha.com

 storyhomesomaha.com

 @Storyhomesomaha

 @Storyhomesomaha

 [storyhomesomaha](https://www.instagram.com/storyhomesomaha)

 [Story Homes Omaha](https://www.youtube.com/StoryHomesOmaha)