

Story Homes

Start your next chapter with us



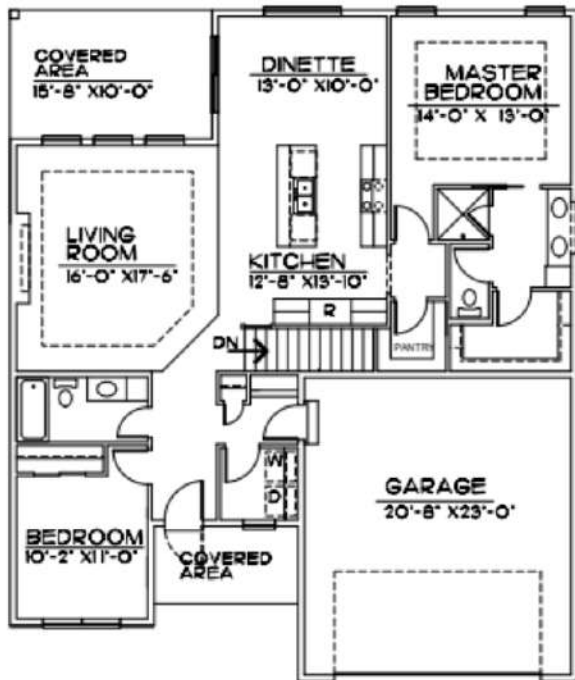

TRADITIONAL



CRAFTSMAN



MODERN



FIRST FLOOR • 1445 SQ.FT.

MAIN FLOOR

Main Features

-  2 bedroom
-  2 Bath
-  2 Car Garage
-  1445 Finished Square FT.

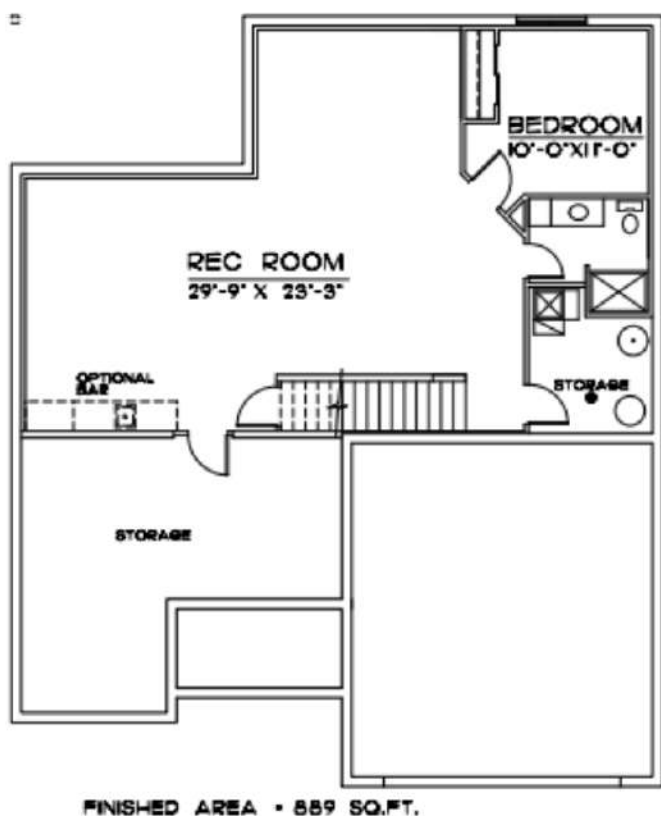
402.305.4031

www.storyhomesomaha.com

The Darcy

GENERAL INFORMATION

- Villa or Ranch Option
- 2 Bedroom
- 2 Bathrooms
- 2 Car Garage
- 3 Car Garage Optional



BASEMENT LAYOUT

INCLUDED FEATURES

- Open Floor Plan
- Covered Front Porch
- Drop Zone
- Subway Backsplash in the Kitchen
- LVP in Kitchen/Dinette, Dropzone, Halls and Entry
- Electric 50" Fireplace
- Stainless GE Appliances
- Built in Appliance Options Available
- Quartz Countertops Throughout
- Delta Plumbing Fixtures
- Double Bath Vanities in Primary Bathroom
- Primary Bath has a glass door with tiled shower
- Wood Shelving Throughout
- James Hardi Cement Board Siding
- Sprinkler System- 5 zone
- Energy Efficient Windows
- 5 Year Dry Basement Warranty
- 1 Year Builder Warranty
- Elevation Options Available
- Finished Basement is Optional - 889 SQ FT
- Great Villa Design with option to be built in single family areas that allow the square footage with a 3rd car garage addition
- Passive Radon System and Humidifier
- Tygar House Wrap
- 2x6 Exterior Walls
- Storm Door
- All Cabinet Hardware Included
- Gas and Electric Hook Ups to Oven Range

CONNECT WITH US

Kristina Philbin: 402.305.4031
info@storyhomesomaha.com

 storyhomesomaha.com



@Storyhomesomaha



@Storyhomesomaha



storyhomesomaha



Story Homes Omaha