

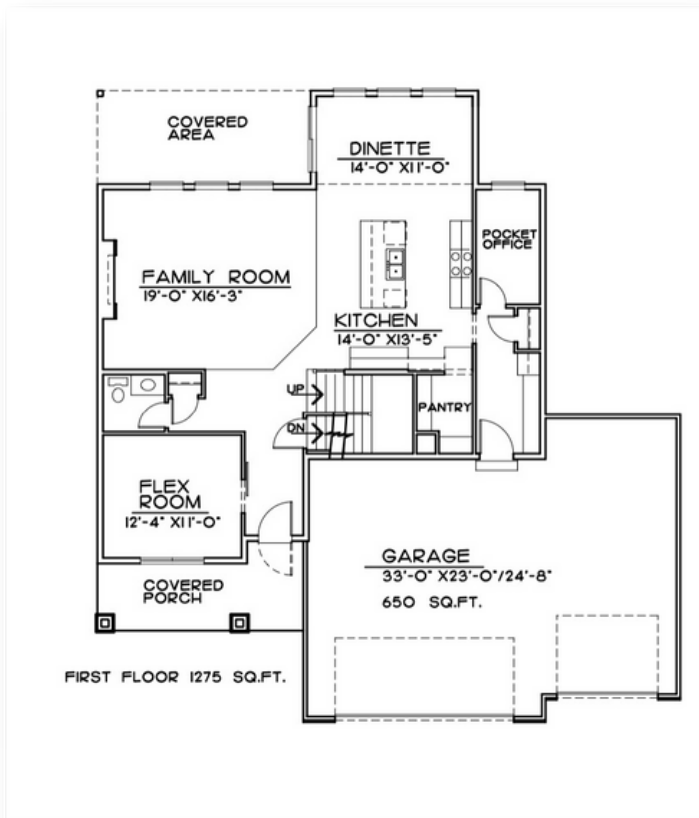


ELEVATION 1







**ELEVATION 2-
FARMHOUSE**

The Wesley

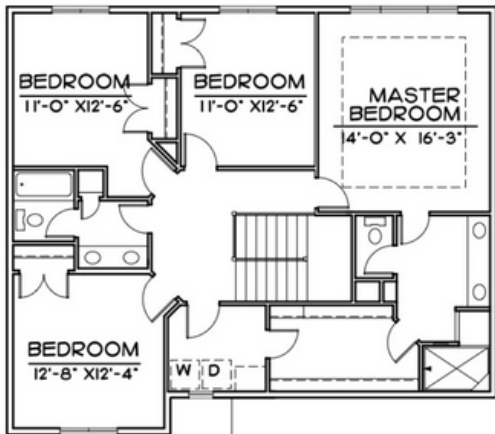


Main Features

-  4 Bedroom
-  3 Bath
-  3 Car Garage
-  2529 Finished Square FT.

GENERAL INFORMATION

- Two Story
- 4 Bedrooms
- 3 Bathroom
- 3rd Car Garage
- 2592 Base SQFT



SECOND FLOOR • 1253 SQ.FT.

INCLUDED FEATURES

- Open Floor Plan
- Drop Zone
- Large Hidden Pantry
- Pocket Office
- Main Floor Flex Room
- Subway Backsplash in the Kitchen
- LVP in Kitchen, Laundry and Baths
- Electric 50" Allusion Fireplace
- Stainless GE Appliances
- Quartz Countertops
- Kohler Plumbing Fixtures
- 2nd Floor Laundry
- Double Bath Vanities in 2nd floor Bathrooms
- Primary Bath has a large walk in shower
- Wood Shelving Throughout
- Coverd Porch and Patio
- James Hardi Siding
- Sprinkler System
- Energy Efficient Windows
- 5 Year Dry Basement Warranty
- 1 Year Builder Warranty
- Elevation Options Available

CONNECT WITH US

Kristina Philbin: 402.305.4031
storyhomesomaha@gmail.com

 storyhomesomaha.com

 @Storyhomesomaha

 @Storyhomesomaha

 storyhomesomaha

 Story Homes Omaha