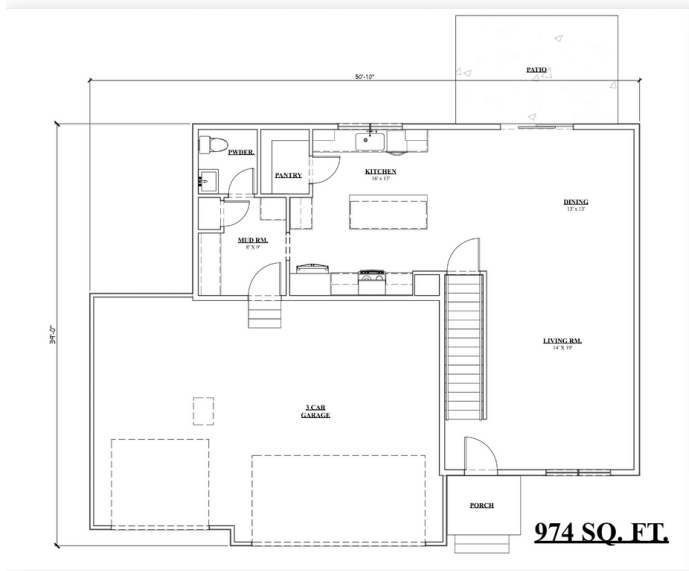




The Locksley



MAIN FLOOR

Main Features

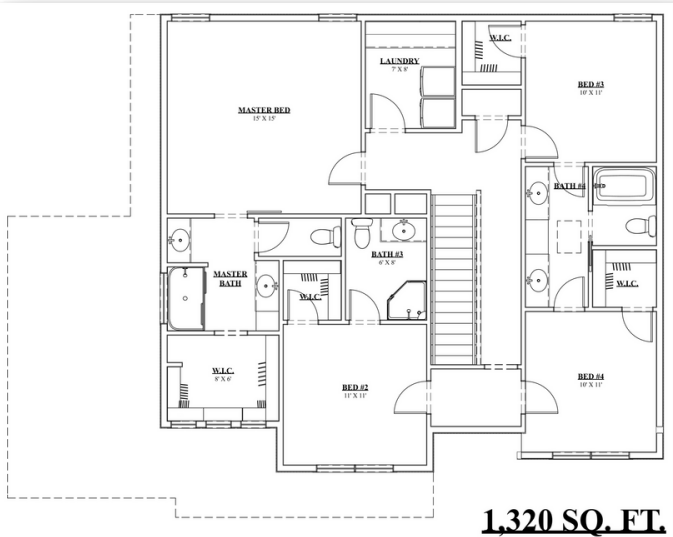
-  4 Bedroom/Main Floor
-  5th Bedroom Option
-  4 Bath
-  3 Car Garage
-  2294 Finished Square FT.

402.305.4031

www.storyhomesomaha.com

GENERAL INFORMATION

- Two Story
- 4 Bedrooms or Main Floor 5th Bed Option
- 4 Bathrooms
- 3rd Car Garage
- 2294 Base SQFT



SECOND FLOOR

INCLUDED FEATURES

- Wide Open Floor Plan
- Drop Zone
- Huge Pantry
- Floating Shelves in Kitchen
- Main Floor Bedroom/Office Option
- Subway Backsplash in the Kitchen
- Electric 52" Allusion Fireplace
- Stainless/Slate GE Appliances
- LVP Throughout Main Floor
- Quartz Countertops
- Kohler Plumbing Fixtures
- 2nd Floor Laundry
- Jack and Jill Bathroom
- Split Primary Bath Vanities
- Optional Tub in Primary Bathroom
- Additional 3/4 Bathroom on 2nd Floor
- Walk-in Closets in All Bedrooms
- Wood Shelving Throughout
- James Hardi Siding
- Sprinkler System
- Energy Efficient Windows
- 5 Year Dry Basement Warranty
- 1 Year Builder Warranty
- Elevation Options

CONNECT WITH US

Kristina Philbin: 402.305.4031
storyhomesomaha@gmail.com

 storyhomesomaha.com



@Storyhomesomaha



@Storyhomesomaha



storyhomesomaha



Story Homes Omaha