



**ELEVATION 1**







**ELEVATION 2 - CRAFTSMAN**



**ELEVATION 3 - MODERN**

*The Lennox XL*

## Main Features

-  3 bedroom
-  2 Bath
-  3 Car Garage
-  1805 Finished Square FT.

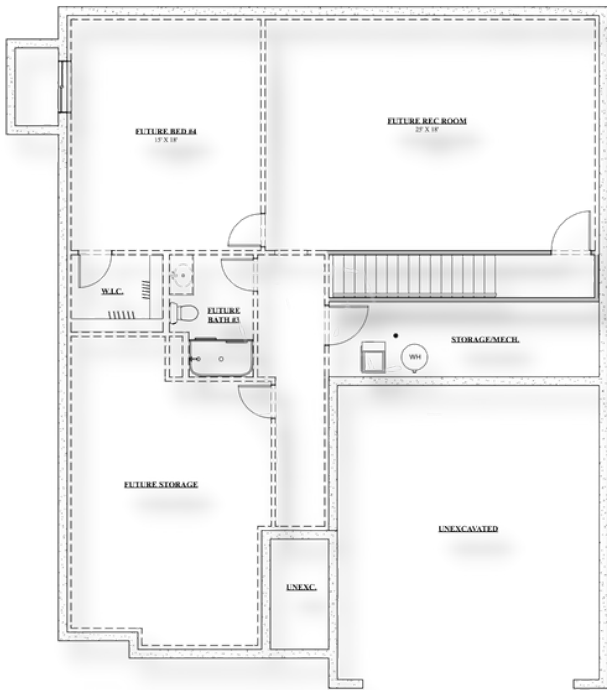


1,805 (FINISHED)  
MAIN FLOOR SQ. FT.

**402.305.4031**  
www.storyhomesomaha.com

## GENERAL INFORMATION

- Ranch or Villa Option
- 3 Bedroom
- 2 Bathrooms
- 2 or 3 Car Garage



1,105 (FUTURE FINISHED)  
BELOW GRADE SQ. FT.

## INCLUDED FEATURES

- Open Floor Plan
- Drop Zone
- Flex Room
- Subway Backsplash in the Kitchen
- LVP in Kitchen, Laundry and Entry
- Electric 50" Allusion Fireplace
- Stainless/Slate GE Appliances
- Quartz Countertops Throughout
- Kohler Plumbing Fixtures
- Double Bath Vanities in Primary Bathrooms
- Primary Bath has a large walk in shower or optional tub layout available
- Wood Shelving Throughout
- James Hardi Siding
- Sprinkler System
- Energy Efficient Windows
- 5 Year Dry Basement Warranty
- 1 Year Builder Warranty
- Elevation Options Available
- Finished Basement is Optional
- Great Villa Design but could be built in single family areas as well with a 3rd car garage addition

## CONNECT WITH US

Kristina Philbin: 402.305.4031  
storyhomesomaha@gmail.com

 storyhomesomaha.com

 @Storyhomesomaha

 @Storyhomesomaha

 storyhomesomaha

 Story Homes Omaha