



ELEVATION 1

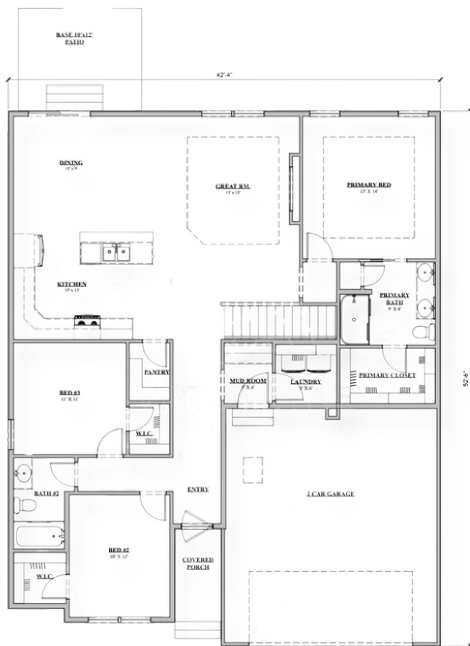


**ELEVATION 2 -
CRAFTSMAN**






**ELEVATION 3 -
MODERN**

The Lennox



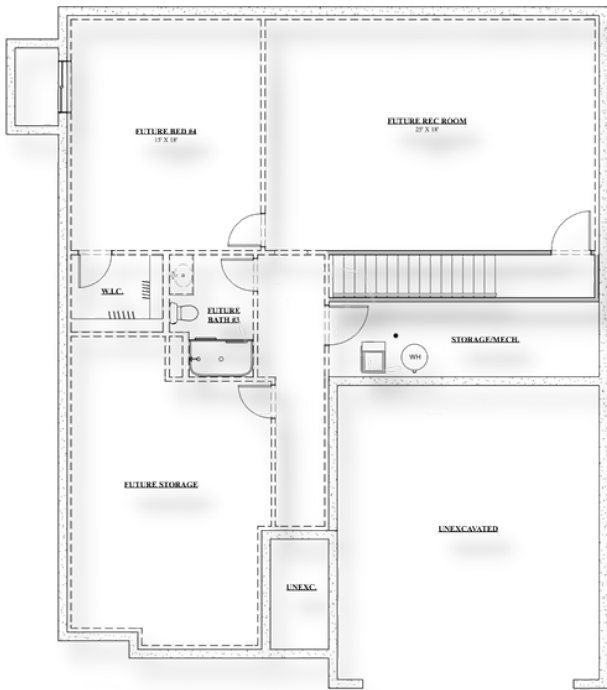
Main Features

-  3 bedroom
-  2 Bath
-  2 Car Garage / 3 Car
Optional
-  1605 Finished Square FT.

402.305.4031
www.storyhomesomaha.com

GENERAL INFORMATION

- Ranch or Villa Option
- 3 Bedroom
- 2 Bathrooms
- 2 or 3 Car Garage



1,105 (FUTURE FINISHED)
BELOW GRADE SQ. FT.

INCLUDED FEATURES

- Open Floor Plan
- Drop Zone
- Flex Room
- Subway Backsplash in the Kitchen
- LVP in Kitchen, Laundry and Entry
- Electric 50" Allusion Fireplace
- Stainless/Slate GE Appliances
- Quartz Countertops Throughout
- Kohler Plumbing Fixtures
- Double Bath Vanities in Primary Bathrooms
- Primary Bath has a large walk in shower or optional tub layout available
- Wood Shelving Throughout
- James Hardi Siding
- Sprinkler System
- Energy Efficient Windows
- 5 Year Dry Basement Warranty
- 1 Year Builder Warranty
- Elevation Options Available
- Finished Basement is Optional
- Great Villa Design but could be built in single family areas as well with a 3rd car garage addition

CONNECT WITH US

Kristina Philbin: 402.305.4031
storyhomesomaha@gmail.com

 storyhomesomaha.com

 @Storyhomesomaha

 @Storyhomesomaha

 storyhomesomaha

 Story Homes Omaha